



Black Contract Door Hardware

The Contract range offers a fantastic retro-fit option. Unique styling and economy pricing will also appeal to the entry level new house market.



VALUESERIES



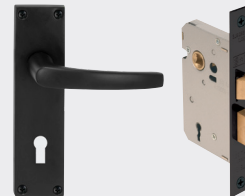
9013 Standard Keyhole
155mm x 42mm Plate



9014 Blank Plate
155mm x 42mm Plate



9015 Lever Set (Pic)
120mm x 42mm plate
9017 Passage Set
120mm x 42mm plate
(9015 plus 1100 latch)



9016 Kit
(9013 plus 1108 lock,
57mm b/s, 78mm c/s)

Finishes: ▀BLK, BN

Combination Barrel Bolts

1362 BLK - 30mm x 30mm x 110mm



1362 SLV - 30mm x 30mm x 110mm



1362 WHT - 30mm x 30mm x 110mm



1363 BLK - 50mm x 35mm x 120mm



1363 SLV - 50mm x 35mm x 120mm

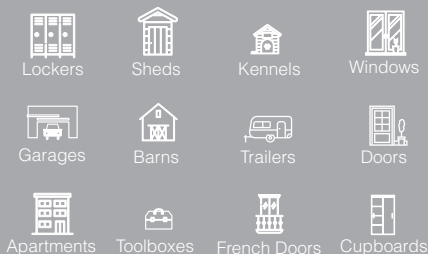


1363 WHT - 50mm x 35mm x 120mm



- > Keyless - choose your own combination
- > One-way screws for high security - tamper resistant
- > Extra tough bolt
- > Stainless steel fixings and heavy duty plastic coating for outdoors - corrosion resistant
- > Suitable for horizontal and vertical fixing
- > Compliments aluminium joinery
- > Versatile, suitable for a variety of applications
- > Easy to install

Finishes: ▀BLK, SLV, WHT



No. 1802

New
Products

windsorbrass.co.nz



Card



Code



Key

3 ways to unlock

Keyless Entry - Card Locks

Card Entry Lever Entrance Set

1335S Touchscreen Lever Entrance Set



Finish: ■ BN

Card Entry Deadbolt Lock

1331S Touchscreen Deadbolt Set



Daily Convenience

- > Back-up mechanical keyway
- > Sensitive touchscreen for ease of use
- > Single-entry user codes available
- > Volume control (gradational options and mute mode)
- > Anti-tamper mode (deactivates all user codes temporarily)
- > Entrance set or deadbolt options available, both the same programming
- > Unlocks with supplied cards, pincodes or keys supplied
- > 2 cards, 2 keys and 4 batteries included
- > 1335S unlocks with your own valid RFID card, can be programmed with a range of user cards - see www.windsorbrass.co.nz for more details

Easy Installation

- > Retro fit over your existing deadbolt holes
- > Minimal tools required for installation
- > Suits standard door thicknesses from 35mm-51mm
- > Graphic step-by-step installation instructions

Product Specifications

User Codes: Up to 25 sets (4 to 8 digits each)
Programming Code: 1 set (4 to 8 digits)
Entrance Set Size (HxWxD):
Exterior lock body: 156mm x 76mm x 32mm
Interior lock body: 156mm x 75mm x 34mm
Deadbolt Size (HxWxD):
Exterior lock body: 138mm x 65mm x 26mm
Interior lock body: 174mm x 70mm x 38mm
Door Bore Hole: 54mm or 38mm
Door Thickness: 35mm to 51mm
Adjustable Backset: 60mm to 70mm
Touch Screen Back-light Colour: Blue
Power: DC 6V (four AA 1.5V alkaline batteries)
Operation Temperature: -35°C to +66°C

Uncompromised Security

- > ANSI Grade 2 certified - tested to over 150,000 times
- > ANSI A156.25 compliant - resistant to dust, rain and corrosion under variable temperatures
- > Four-digit guiding code (prevents code-probing by increasing fingerprints on the touch screen)
- > Touch screen is temporarily disabled after 4 consecutive incorrect entries
- > Auto-lock timer with adjustable delay (programmable from 10-99 seconds)

No. 1802

New
Products

windsorbrass.co.nz